

BackupAssist™ v8

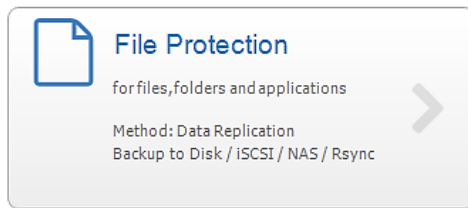
File Protection using rsync

User guide

Contents

1. Introduction	2
Documentation	2
Licensing	2
Overview	2
2. Rsync considerations	3
3. Creating a File Protection backup using rsync	4
4. Restoring from a File Protection backup	8
5. File Protection using rsync backup management	11
Rsync Data Seeding.....	11
Scheduling	13
Files and applications: VSS	13
6. Support and Resources.....	14

1. Introduction



BackupAssist File Protection includes a powerful tool called Rsync that can back up data across the internet to any rsync host. This guide outlines how to use Rsync to protect your data.

Adding rsync backups to your backup strategy is an excellent way of insure yourself against data loss. Critical files can be copied to a secure, offsite location, away from your office, and backing up across the internet overcomes the need to swap tapes or hard drives. Once you've selected the host where your data will be stored, no further equipment or maintenance is required. Additional storage space can be easily added to the data host as your data requirements grow, so you don't have to worry about purchasing replacement hardware. Best of all, your critical files are available whenever you need them and can be accessed from wherever you are, using BackupAssist.

Documentation

This guide explains how to create backups and perform restores using an rsync destination with BackupAssist File Protection. To learn how to set up your rsync destination, see our rsync setup guide.

File Protection– [Rsync setup guide](#).

BackupAssist – [Backup tab user guide](#)

Rsync how-to video - [Video Presentations page](#).

Licensing

File Protection is a standard feature included with the BackupAssist license. To back up data across the internet with rsync, requires the *Rsync Add-on* license, once the initial trial period has expired. Please contact your local BackupAssist reseller or distributor for pricing information, or visit www.BackupAssist.com.

For instructions on how to activate / deactivate license keys, visit out [Licensing BackupAssist page](#).

Overview

Rsync is an open source application used to synchronize files and directories from one location to another. BackupAssist's implementation of this technology is in the form of an rsync destination option for File Protection backups, which allows you to back up data across the internet. The data transfer is minimized because only the data that has changed is transmitted and all data packets are compressed. You can also use built-in rsync encryption to protect the data on the rsync host.

The rsync destination that you use can be either an rsync server that you maintain yourself or a third party destination that supports rsync. Third party destinations include data centers, ISPs and cloud providers. These solutions have the advantage of high availability networks with saleable storage.

BackupAssist includes a dedicated configuration screen for backups to Amazon S3 via the s3rsync.com service. To backup to Amazon S3 with rsync, you will need both an Amazon account and an S3Rsync account.

2. Rsync considerations

The performance and flexibility of backing up across the internet can depend on how rsync is implemented. Below are some key considerations when planning your rsync backup solution.

VSS applications

VSS applications including Exchange, SQL and Hyper-V, can be backed up to an rsync destination using File Protection. For Hyper-V however, we recommended System Protection backups, which do not support the rsync destination but do support granular Hyper-V gest restores.

Synchronizing drive images using rsync

Rsync is a destination for File Protection backups. It is possible for the data source to be a System Protection image backup, but this solution is not recommended because significant performance issues that can arise. If you want to back up important files to an rsync host, the best way is to back up those files using File Protection directly. Continue to create your image backups, but back up the important files independently using a File Protection rsync backup job.

We also advise against using File Protection's rsync, to transfer File Archiving backups to an rsync host. This is because rsync uses a checksum method to perform the bit level data transfer. Rsync checks whether any data has changed by looking at the file size and modification date. This is fast and simple on a regular file system, but if you have a very large single archive file (>100 GB) it will take much longer to complete, even if only a small element has changed.

Seeding

Rsync backups are incremental backups. The first time you perform your backup, no data will exist on the data host so a full backup will be required. Seeding your backup via an internet connection may not be practical, so two methods are provided to seed your data host. These are explained in the [Rsync backup management](#) section of this document.

Single-Instance store

File Protection backups cannot use single-instance store when the backup is saved on a ReFS formatted rsync destination. This means all the data will be backed up each time the backup job runs.

Backup source & frequency

Run your rsync job regularly. Regular daily backups will ensure that you keep your data transfer to a minimum and your data up-to-date.

Simultaneous backups

If you have a large number of backup jobs sending data to a host at the same time, the connections may become unreliable. It is recommended that you limit the host connections 5 at a time. Depending on storage requirements and the bandwidth available, you may increase this number with caution.

Backup user accounts

Rsync backup jobs require an BackupAssist administrator account with read access to the data source. This is set up using the *Backup user identity*, option in the *Settings* tab. The backup job will also need an rsync host account with read-write access to the rsync destination. This is enabled on the host server, and enter in the rsync destination screen.

3. Creating a File Protection backup using rsync



The following instructions describe how to create a File Protection backup job to back up your data to an rsync host.

Launch BackupAssist and follow the steps outlined below:

1. Select the **Backup** tab, and click **Create a new backup Job**

2. Select **File Protection**, and enter the details in the screen provided.

If this is the first time you have created a backup job, you will be asked to provide a *Backup user identity* if one has not been defined.

3. **Selections**

The selections screen is used to select the data and applications that you would like to back up. Any VSS applications detected will be displayed here as application directory containers.

Select the volumes, folders, files and applications that you want to back up, and click **Next**.

4. **Destination media**

The destination screen is used to select the type of media that you want to back your data up to. This step's name will change to "Rsync", when you click next.

Select **Rsync** or **S3Rsync** for your backup destination, and click **Next**.

The *S3Rsync* option is for backups that use both Amazon S3 and the s3rsync.com service.

Select **Enable Rsync file based encryption** if you want the backup data to be encrypted.

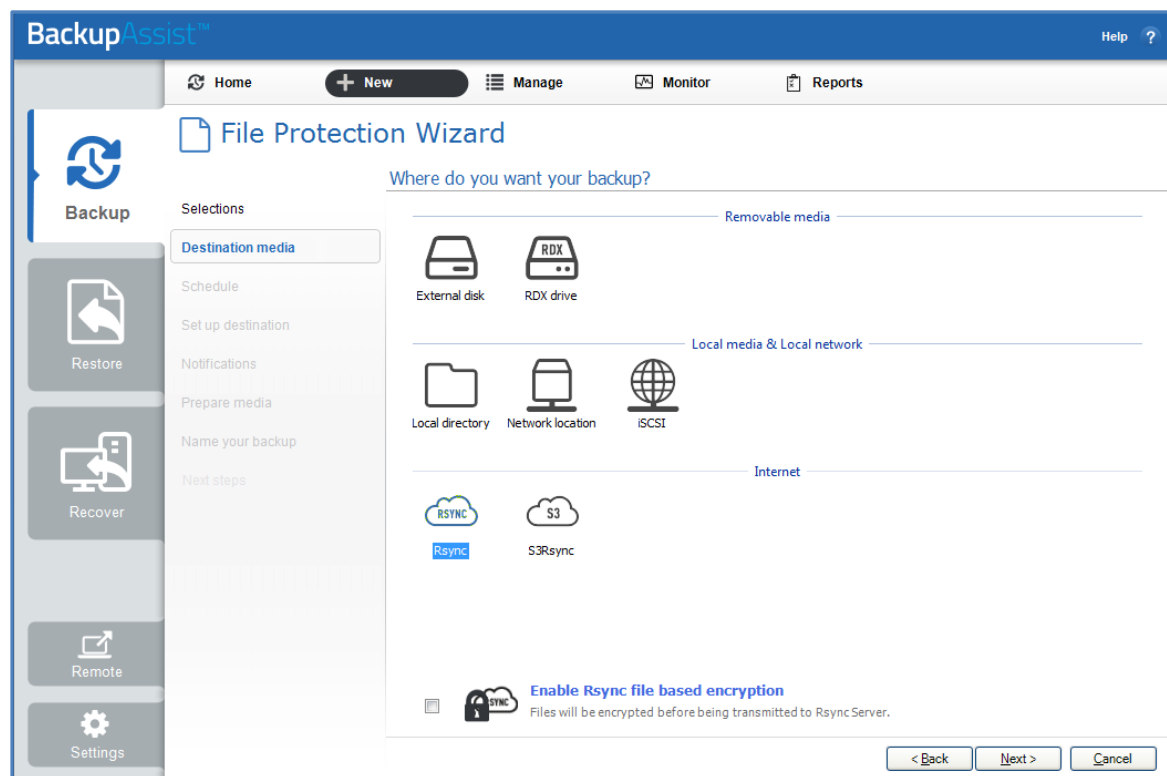


Figure 1: File Protection backup – Rsync destination selection

5. Schedule

This screen is used to select when the backup job is to run, and what the mix of daily and archive backups will be. A set of pre-configured schedules, called schemes, will be displayed.

Select an appropriate scheme and click **Next**.

- The schemes available will depend on the type of destination media selected in step 4.
- Clicking on a scheme will display information about the schedule used.

To learn more about File Protection schedules, refer to the [Backup management](#) section below.

6. Set up destination

The screen is used to configure your rsync destination. The configuration screen displayed will depend on whether *Rsync* or *S3Rsync* was selected.

IF the standard **Rsync Destination** was selected, follow the guidelines below:

The screenshot shows the BackupAssist File Protection Wizard interface. The main window is titled "File Protection Wizard" and has a navigation bar with "Home", "New", "Manage", "Monitor", and "Reports". The left sidebar contains icons for "Backup", "Restore", and "Recover". The main content area is titled "Rsync server settings" and includes a warning threshold of 90% and several input fields: "Rsync Server", "Server type" (set to "Rsync over SSH"), "Port" (set to 22), "Path on server", and "Username". There are also buttons for "Register with server..." and "Test connection".

Figure 2: BackAssist File Protection – Rsync destination selection

- Rsync Server:** Enter your rsync server name (or IP address).
- Server Type:** Select *Rsync over SSH*, *Rsync Daemon* or *Rsync Daemon over SSH tunnel*.
- Port:** The default port will display for the server type selected.
- Path on server:** It is best to use a new, empty directory for this path. The parent directory must exist. The sub directories will be created when the job is first run: `/parent/sub_directory/`.
 - If your host is running *Windows*, enter a normal Windows path here, such as `C:\Backups`. Alternatively, enter a path relative to the user's home directory using a tilde (`~/Backups`)
 - If your data host is running *Linux*, you can use an absolute path by starting with a slash or a path relative to the user's home directory by starting with a tilde (e.g. `~/Backups`).
- Username:** Enter the username that was activated when the rsync host was set up.
- Register with server:** Selecting this option will prompt you to enter the password. BackupAssist will then create a public / private key pair to authenticate you to the data host.
- Test connection:** Use this button to test your connection to the rsync server. If this step fails but registration succeeded, the problem may be that the *Path on server* cannot be accessed.

IF the **S3Rsync Destination** was selected, follow the guidelines below:

The screenshot shows the BackupAssist File Protection Wizard interface. The main window is titled "File Protection Wizard" and has a sub-header "S3Rsync server settings". On the left, there is a sidebar with navigation options: Backup, Restore, Recover, Remote, and Settings. The main content area contains the following fields and buttons:

- Rsync Server:** A text input field containing "farm.s3rsync.com".
- Port:** A dropdown menu set to "22".
- Amazon S3 bucket:** An empty text input field with a "Set path..." (optional) link to its right.
- Access Key ID:** An empty text input field with a "Sign up..." link to its right.
- Secret Access Key:** An empty text input field.
- S3rsync username:** An empty text input field with a "Sign up..." link to its right.
- S3rsync SSH key path:** An empty text input field with a "Browse..." button to its right.
- Test connection...** A button below the input fields.
- A disclaimer: "BackupAssist is not affiliated with and does not endorse either S3rsync or Amazon S3."
- Rsync file based encryption:** A section with two text input fields: "Enter password:" and "Confirm password:". Below these fields is a red warning: "Forgotten passwords are impossible to retrieve."

At the bottom right of the wizard, there are three buttons: "< Back", "Next >", and "Cancel".

Figure 3: BackupAssist File Protection – S3Rsync destination selection

The information below is provided when you create:

- An [Amazon S3](#) account
 - An [S3rsync](#) service account.
- a. **Rsync Server:** This should be farm.s3rsync.com (the default setting) unless you have been advised otherwise by s3rsync.com.
 - b. **Port:** This should be 22.
 - c. **Amazon S3 bucket:** You can leave this blank unless you want to set up multiple backup jobs using the same bucket (not recommended).
 - d. **Set Path:** Specify any folders you have created in the bucket.
 - e. **Access Key ID:** Enter your S3 Access Key ID.
 - f. **Secret Access Key:** Enter your S3 Secret Access Key.
 - g. **S3rsync username:** Your username supplied by s3rsync.com (note: this is different to your Amazon username).
 - h. **S3Rsync SSH key path:** The location of the saved SSH key file provided by S3rsync.com.
 - i. If you selected *Enable Rsync file based encryption*, you will be prompted to create a password.

Once you have set up your rsync destination, click **Next**

Note: It is important that you keep a copy of your password in a safe place, as we cannot retrieve passwords if they are lost or forgotten.

For information on configuring S3Rsync, see the [Rsync setup guide](#).

For information on configuring Amazon S3 go to [our Amazon S3 blog post](#)

7. Notifications

Once a backup job has completed, BackupAssist can send an email to inform the selected recipients of the result. This email notification can be enabled during the creation of a backup job, if the mail server has been configured.

To enable email notifications:

- Select, **Add an email report notification**.
- Enter recipients into the **Send reports to this email address** field.
- Enter recipients into the **Also send reports to this email address** field. You can then select the condition under which the email should be sent, using the drop-down box.

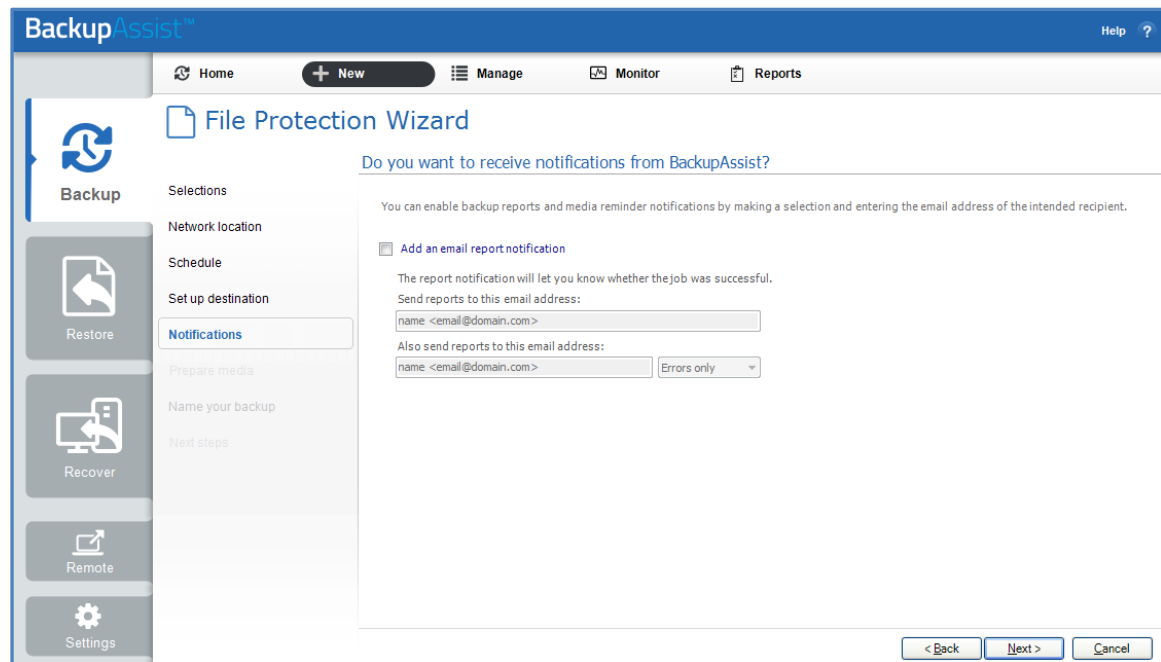


Figure 4: File Protection - Notifications setup

After the backup job has been created, you can modify the notifications by adding and removing recipients, setting additional notification conditions and including print and file notification types.

To send email notifications, you will need to configure an SMTP mail server for BackupAssist. See the [BackupAssist settings section](#) to learn more or the [Backup tab user guide](#) for instructions.

- Prepare media** will be skipped because rsync backups do not use removable media.
- Name your backup**

Provide a name for your backup. Click **Finish**.

► The File Protection with rsync backup job has now been created.

Important: Once a **backup job** has been created, it should be reviewed and run using the *Manage* menu. This menu provides additional options to configure your backup. See the section, [File Protection using Rsync backup management](#), for more information.

Important: Once the *backup* has been created, it should be checked. You can check the backup by performing a manual test restore, or using the [Backup Verification feature](#). A manual restore is the only way to fully test a backup, and regular manual restores should be part of your backup solution.

4. Restoring from a File Protection backup



This section provides instructions on how to restore data that was backed up using BackupAssist's File Protection using rsync.

To restore data from a **File Protection** backup, start BackupAssist and follow these steps:

1. Select the **Restore** tab

The *Restore tab* has a *Home page* and a *Tools menu*. The *Home page* is the default screen and the recommended starting point for performing a restore. The *Tools menu* should only be used by experienced administrators or users being assisted by technical support.

2. From the **Home page**, select the type of restore you want to perform. When you select one of the restore categories provided, BackupAssist will locate the corresponding backups for you.

- *Files and folders* will display all data backups and all VSS application backups.
- *Applications* will display backups that contain VSS applications, and exclude data only backups.
- *Exchange, SQL or Hyper-V*, will display all backups that contain the selected application. Selecting an application type will display application specific restore tools (e.g. Hyper-V Granular Restore and SQL Restore) as well as the Restore Console.

3. Once you have selected the type of restore you want to perform, the *Home page* will display all backups catalogued by BackupAssist that match your selection. The backups will be grouped by the backup's source location, and by the restore tool that can be used.

- If a backup can be used by two restore tools, it will appear in two groupings.
- If a backup contains data from multiple locations, it will appear in a grouping for each location.

If your backup included both data and VSS applications, both will be available to restore once the backup has been loaded in step 4, regardless of the restore type selected.

Select the **Restore Console**.

Job	Backups	Earliest	Latests
Files on D: 1 backup(s)			
image exchange	1	5/7/2013	5/7/2013
Files on C: 45 backup(s)			
Daily Backup	1	7/18/2014	7/18/2014
File Server MLB1	8	6/30/2014	7/22/2014
File Server MLB2	8	6/30/2014	7/22/2014
File Share Archiving	8	6/30/2014	7/22/2014
fileProt-rsync	6	5/21/2013	6/17/2013
filerep	1	5/2/2013	5/2/2013
image exchange	1	5/7/2013	5/7/2013
rsync exchange	1	5/16/2013	5/16/2013

Figure 5: BackupAssist Restore Home page – selection results

4. Restore Console – backup and data selection

The BackupAssist *Restore Console* will open and load all of the backups that were listed on the *Home page*. The next step is to locate the data you want to restore, from the loaded backups.

The Restore Console provides two tools to locate your data:

- The **Browse** tab. Select this tab if you know the backup and date you wish to restore from, or if you need to restore an entire backup set.
 - a. Use the drop-down menu to choose the backup that you want to restore from.
 - b. Use the calendar to select the date you want to restore from.
 - c. Use the middle panes to expand the backup set.
 - d. Select the data to restore.
 - e. Click **Restore to** at the bottom right of the window.
- The **Search** tab. Select this tab to search all of the loaded backups for the data you want to restore. You can display data filtered by name, date, size and type, for all backups. The results can be compared (e.g. the dates of two files) to identify the correct data selection.
 - a. Enter your search term (The search accepts wild card searches, such as **.log* or **.doc*).
 - b. Select a filter/s if required.
 - c. Click the *Search* button.
 - d. Select the data to restore.
 - e. Click **Restore to** at the bottom right of the window.

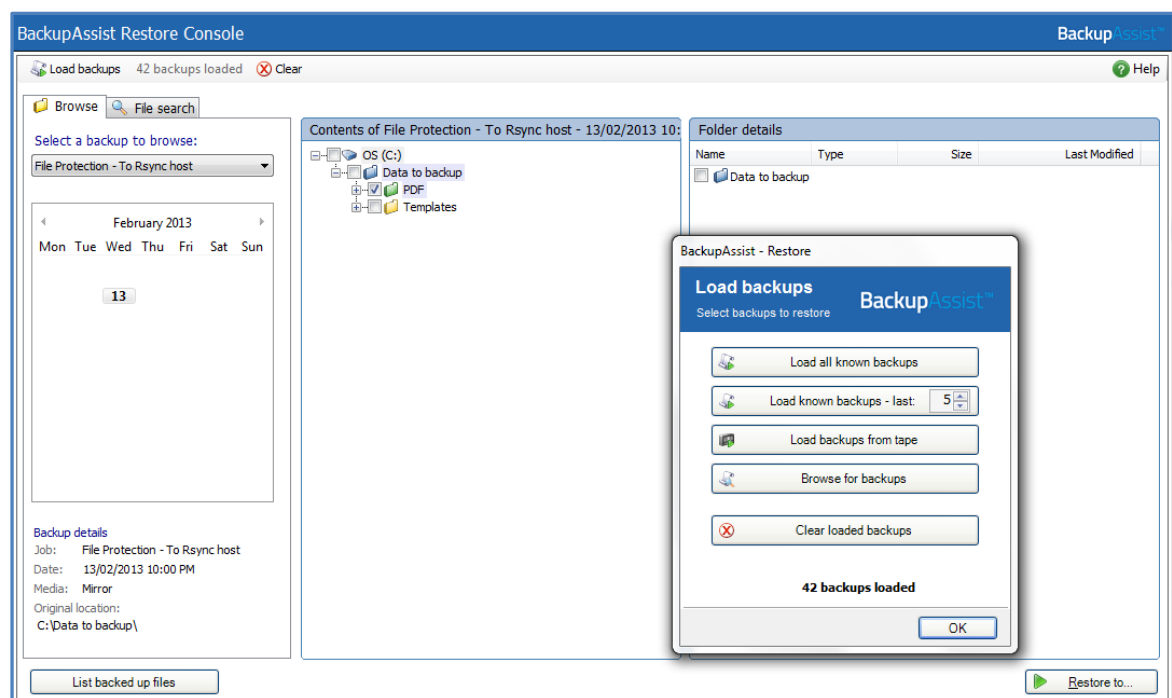


Figure 6: BackupAssist Restore Console – backup and data selection

If the backup is not present, or if you wish to load additional backups, select the **Load backups** option. Click **Load all known backups** to load all backup catalogues.

For more information about data selection, refer to the [Restore tab guide](#).

5. Restore Console – restore destination selection

When you select *Restore to*, a window will open showing the *Backup location*, the *Restore to* destination and the *Restore options*.

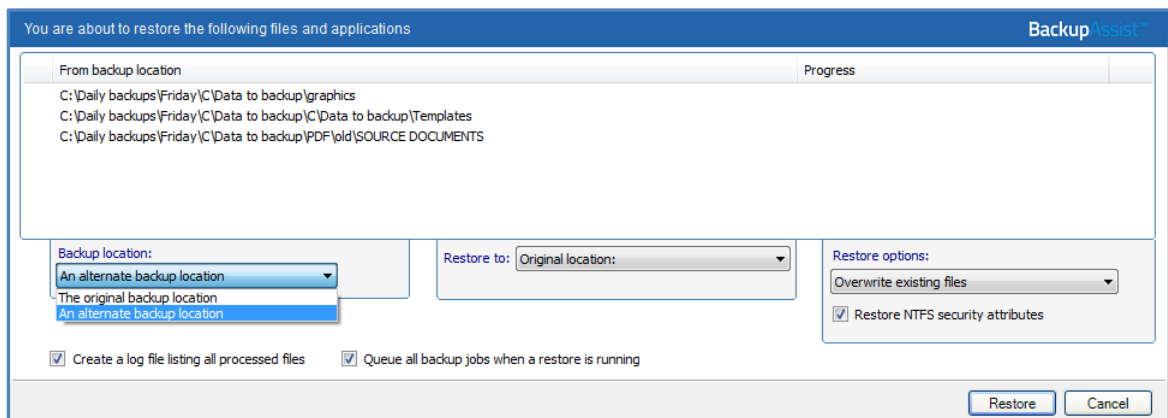


Figure 7: BackupAssist Restore Console – restore destination

- a. Review **Backup location**.
- b. Review **Restore to**: Leave the *Original location* selected or chose an *Alternative path*.
Restoring to an alternate location will use a minimal path. For example, restoring a single file to an alternate location will copy the file to the location without re-creating the original folder structure.
- c. Review the **Restore options**:
 - Select one of the following: *Overwrite all existing files*, *Do not overwrite existing files* or *Only overwrite older files*.
 - The option, *Restore NTFS security attributes* will be selected by default.
- d. Selecting *Create a log file listing all processed files*, will create a file that lists the success or failure of each file. The log is opened by selecting the log file's link in the backup report.
- e. *Queue all backup jobs when a restore is running*, is selected by default.
- f. Click the **Restore** button.
 - The Restore Console will connect to your rsync host and restore the selected files.
 - The restore will run from the destination window and a **Report** link will appear once the restore has finished.
- g. Select **Done**.

► **Your File Protection using rsync restore has now been completed.**

Important: Only backups made with BackupAssist v5.3 or later will show up in the Restore Console.

Important: The Restore Console can restore encrypted files, but you will need to supply the password. It is important that you keep a copy of your password in a safe place, as we cannot assist you with opening password encrypted files if your password is lost or forgotten.

Helpful hint: These instructions explain how to restore data using the *BackupAssist Restore console*. If you do not have BackupAssist installed and need to restore a *File Protection* backup, you can manually browse the *rsync* destination and transfer data back using any method permissible by your host.

5. File Protection using rsync backup management



Once you have created a backup job, you can modify the settings and access advanced configuration options using the *Manage* menu.

To access the backup management screen:

1. Select the BackupAssist, **Backup tab**.
2. Select **Manage** from the top menu. A list of all backup jobs will be displayed.
3. Select the backup job you want to modify, and select **Edit**.
4. Select the required configuration item on the left. Key configurations are described below.

To learn more about the backup management options, see the [Backup tab guide](#).

Rsync options

Select the **Rsync options** item from the left hand menu. The *Rsync options* page contains 15 different configurations for backing up your data across the internet including:

- Rsync and SSH command line options.
- Data transfer limits.
- Backup permissions.
- Backup logging and a media usage report.
- Rsync encryption and encryption password.

Rsync Data Seeding

Rsync backups are incremental backups. The first time you perform your backup, no data will exist on your data host so a full backup is required. If you enable or disable encryption for an rsync job, BackupAssist will need to *re-seed* the backup to the rsync backup destination with a full set of data.

Seeding your backup via an internet connection can take a long time. For this reason, two data seed options are available for rsync host servers that you have local access to. This may exclude third party vendors. Once the initial seed to the data host is complete, each successive backup will be an incremental backup of data that has changed.

Option 1 – Seeding a permanently offsite data host

You can use BackupAssist's *Seed Backup* function, to automatically seed data offsite using a removable media, which can be physically transported to the data host so that the data can be uploaded locally.

To seed your data using this method, follow these steps:

1. Connect a removable media device to the machine running BackupAssist.
2. Select your backup job from the **Manage** Menu
3. Select **Edit** from the top menu.
4. Select the **Destination** left menu item.
5. Click the **Seed backup** button
6. Select the location of an empty folder on your portable media.

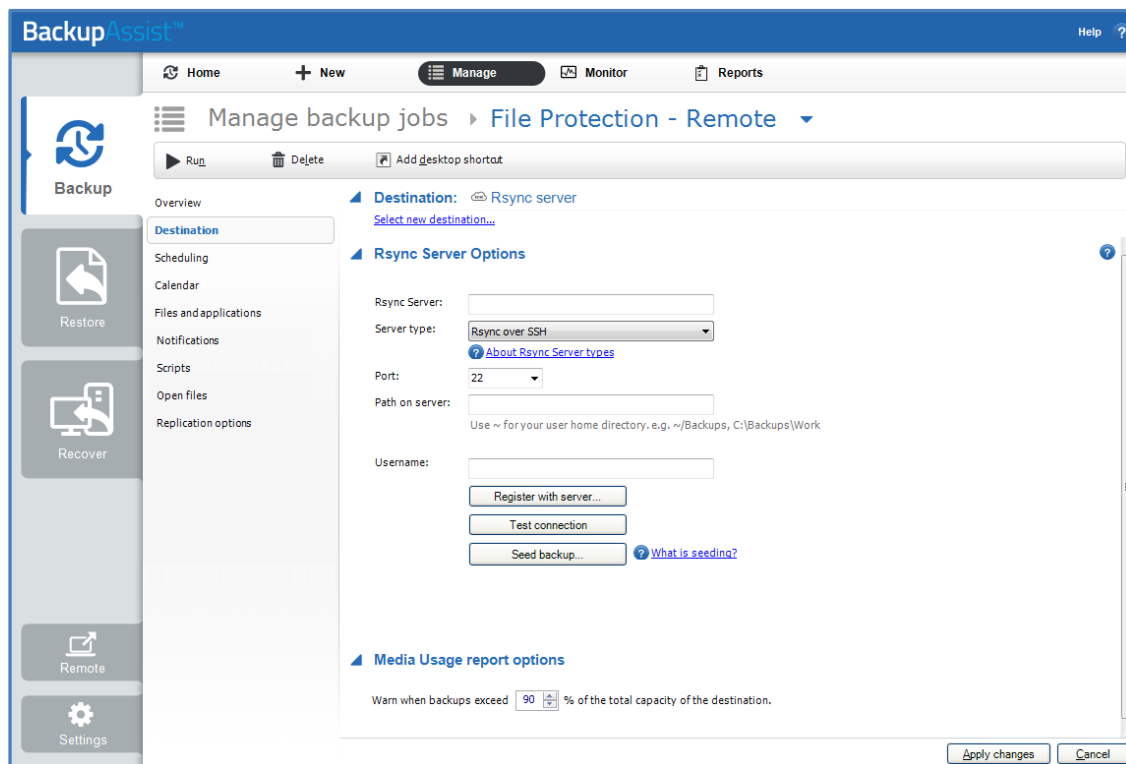


Figure 8: Manage backup jobs screen – Destination seeding

7. Once the seed is complete, your portable media should contain:
 - A **directory** with the seeded data
 - A **README.txt** file containing instructions on how to copy the seed to your rsync server
 - An **.sh script file**, which is used to copy your data to your rsync server.
8. Transport the portable media containing the seed to the site where your rsync server is located.
9. Connect the device to the rsync host server and copy the seed to it:

For a Windows server (assuming the seed is located on E:\SeedFolder)

- a. Go to the *Start* menu > CopSSH > Start a Unix BASH shell.
- b. Enter the following command: `bash "/cygdrive/e/SeedFolder/seed.sh"`.

For a Linux or Unix server (assuming the seed is located in /mnt/usbdrive/SeedFolder).

- a. Run the following command in your shell: `bash "/mnt/usbdrive/SeedFolder/seed.sh"`.

A complete seed of your data should now be copied to your rsync server. Each successive backup from now on will be an in-file delta incremental backup of data that has changed.

Option 2 – Bringing your data host onsite to perform the seed

This method is suitable for “standalone” data hosts (where a data host is not shared among multiple clients) that can be physically transported onsite – such as NAS devices.

Seeding your data is easy – simply follow these instructions:

1. Connect your data host to the LAN and make a note of its IP address / Hostname.
2. Create your BackupAssist rsync job, run it at convenient time and wait for it to complete.
3. Move your NAS to its permanent location.
4. Update the job settings in BackupAssist to reflect the new IP address / Hostname.

Scheduling

Selecting *Scheduling* will display the **Scheduling options**. You can use this screen to change the default time and days of your scheme's daily backups. If you selected a scheme with archive backups (e.g. weekly, monthly), you can specify when each archive backup will run. The current scheme is shown, along with two pop-up menus: *Select a new schedule* and *Customize schedule*.

Select a new Schedule: This will display the pre-configured backup schemes that you chose from during the creation of your backup job. The selections available will depend on the type of destination media you have selected. You can select a different scheme using this option.

Customize schedule: This selection can be used to modify each backup within your current schedule. The customizations available will depend on the type of backup media used. For File Protection backups, the *Method* field can only be set to *Automatic*. This is because single instance store provides the benefit of incremental backups in a full backup format. This technology is managed by BackupAssist and does not require further modification.

Files and applications: VSS

The Volume Shadow Copy Service (VSS) is a Microsoft Service that creates a copy of an application's data (e.g. Exchange and SQL) so the data can be backed up without interfering with the application. BackupAssist is a VSS-aware backup client, so it can **backup application data using VSS**. BackupAssist will automatically detect *locally* running VSS applications and list them for selection during the **Destination** step of the backup job creation.

VSS applications are displayed under the **Files and applications** menu item. You can modify your backup job by selecting entire VSS applications or drilling down to individual components. In some cases, only applications that are currently running will be detected. If an application is not listed, try restarting it and then click the *Refresh* button in BackupAssist.

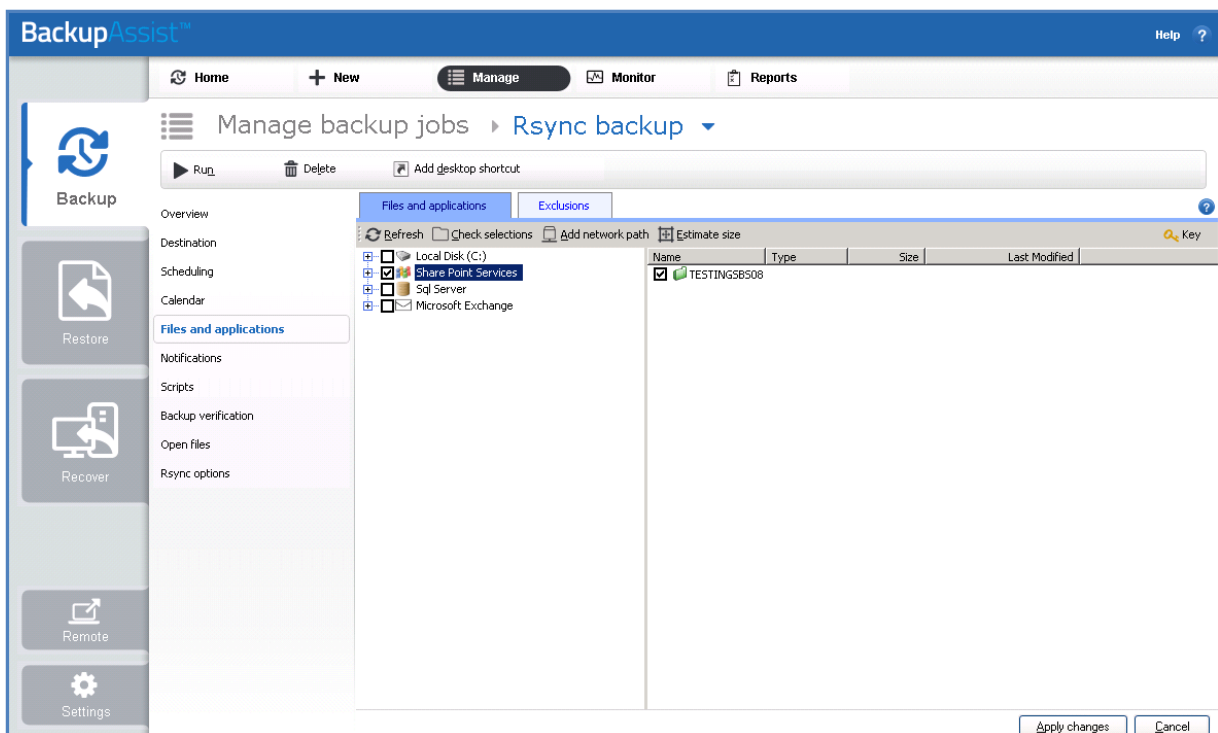


Figure 9: Manage backup jobs screen – File and applications option

6. Support and Resources

These resources can be used to help troubleshoot common rsync backup problems.

Troubleshooting FAQ

Test connection failed

Ensure that you are able to ping your rsync server from your BackupAssist server and that you have opened up the appropriate ports on your firewall. Make sure that the username can access the path you have specified.

SSH Connection Refused

Ensure that the services *Openssh SSHD* and *RsyncServer* are started on the data host machine (Administrative Tools > Services). Make sure your firewall is not blocking the attempt.

Register with server failed

Ensure that you have the correct username and password set up on your rsync server.

Appendix

Data host

The server that has been set up to host backup data.

Client

The machine that BackupAssist is installed on, that sends data to the data host.

SSH Authentication

For SSH communication, we use a public / private key method of authentication, meaning that you will only be asked for your password once (when registering with the server), and your public key will be uploaded to the server, enabling BackupAssist to log into the server in the future in a secure, password-less manner. For more information on public / private key authentication, visit the following Wikipedia article: [Wikipedia Public Key Cryptography](#)

Daemon Authentication

In Daemon mode, your password is stored in an encrypted format by BackupAssist and provided every time the backup runs. When running in Daemon mode, traffic will be unencrypted. For this reason, we recommend that you only use closed network environments, such as LANs or WANs connected by a secure VPN. VPNs inherently encrypt communication between nodes, so using rsync in Daemon mode over a VPN is still secure.

Contacting Technical Support

Should you have any questions regarding either BackupAssist or File Protection using rsync, please email support@backupassist.com and we will respond to you as soon as possible.

Similarly, if you have any suggestions for additional functionality in BackupAssist, or new products or add-ons, please also forward your feedback to support@backupassist.com