

# Ethernet Switches

## Simple cloud management

Datto switches continue to deliver on the expectation of simple, robust cloud-management capabilities to ensure a smooth evolution while delivering orders of magnitude improvements in speed and functionality.

## Next level flexibility

Datto provides powerful, business-class ethernet switching products with affordable models and flexible product options making it easy to find a solution to meet most requirements for IP business communications.

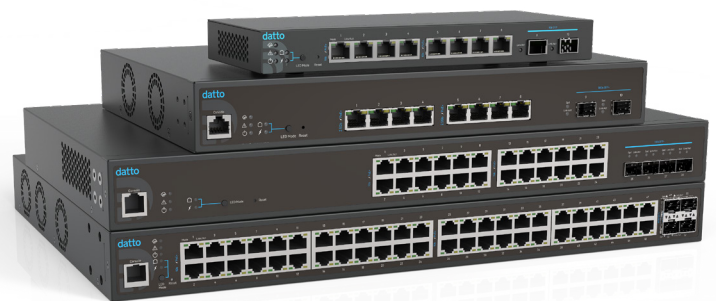
- Low, medium and high density configurations
- High capacity optical uplink ports
- Scalable power budget for PoE devices
- Low noise-level cooling
- High-temperature thermal operation
  - Configuration templates allow for quick provisioning of common configuration
  - IP Routing (with future software release)

## Multi-gigabit 2.5G/10G switch

In select configurations, take advantage of multi-gigabit copper access ports to increase network performance and boost high bandwidth applications such as backup and restore, or maximize the benefits of a Wi-Fi 6 WLAN deployment.

## Power over ethernet on all ports

Datto next generation switches deliver total power output ranging from 110W to 410W to energize compatible devices. Eliminate the need for additional power runs and bulky injectors to satisfy the growing demand of high consumption endpoints such as wireless access points, IP cameras, smart lighting, digital signage or point-of-sale systems.





DSW100-8P-2G

DSW100-24P-4X

DSW100-48P-4X

DSW250-8P-2X

	Gigabit Ethernet			Multi-Gigabit Ethernet
<b>Port Density and Power Output</b>				
Copper Ports	8x GigE	24x GigE	48x GigE	8x2.5 GigE
Optical Ports	2 SFP	4 SFP+	4 SFP+	2 SFP+
PoE Budget (W)	110	250	410	240
<b>Layer 1 Features</b>				
PoE Management	Power on/off per port, power class configuration, power feeding with priority, user-defined power limit, IEEE 802.az Energy Efficient Ethernet (EEE)			
<b>Backplane Capacity</b>				
Backplane Capacity (Gbps)	20	128	176	80
<b>Layer 2 Specifications</b>				
Maximum VLANs	4096			4096
Max Frame Size	Up to 10K bytes	Up to 12K bytes	Up to 9K bytes	Up to 10K bytes
Unicast Mac Address	8K	16K	32K	16K
Packet Buffer Memory	4.1M bits	12M bits	16M bits	12M bits
Layer 2 Features	802.1Q VLANs, Port Trunking/802.3ad link aggregation, port mirroring, auto-detect uplink port, port isolation, IGMP snooping, rate limiting (Tx/Rx), flow control, jumbo frames, LLDP (Up to 256 unique VLAN IDs can be configured)			
Spanning Tree Protocol	802.1w Rapid Spanning Tree (RSTP), 802.1s Multiple Spanning Tree (MSTP)			
VoIP Provisioning	QoS, Voice VLAN + OUI list, LLDP-MED			
<b>Layer 3 Specifications [*= In future software upgrade]</b>				
IPv4 Static Route and Default Route*	Up to 63 entries			
DHCP*	DHCP Relay, DHCP Snooping			
Access Control	MAC, IPv4 Based ACLs. Actions: Permit/Deny			
Quality of Service	802.1p/CoS, DSCP			
<b>Remote and Local Management and Monitoring</b>				
Cloud Management	Full support within Datto Network Manager, no on-site appliance required.			
SNMP Polling	v1/v2c, supporting MIBs RFC1213, RFC1493, RFC1757, RFC2674			
Troubleshooting Tools	Cable Diagnostics, Ping, Traceroute			
<b>Physical &amp; Environment</b>				
Mounting	Desktop, wallmount	Desktop, wallmount, rackmount	Desktop, wallmount, rackmount	Desktop, wallmount, rackmount
AC Input	100-240 VAC, 50/60Hz External power adapter 54V/2.22A	100-240 VAC, 50/60Hz	100-240 VAC, 50/60Hz	100-240 VAC, 50/60Hz
Operation Temperature	0-40°C	0-40°C	0-50°C	0-50°C
Storage Temperature	-20-70°C	-20-70°C	-40-70°C	-40-70°C
Humidity	Operation: 10%-90% RH Storage: 5%-95% RH			
Dimension (WxDxH)	240x105x27 mm	440x257x43 mm	440x410x44mm	330x230x44 mm
Certifications	FCC, CE (Class A)	FCC, CE, Canada, and C-Tick	FCC, CE, C-Tick	FCC, CE
Peak Power (Watts)	120	300	480	300

**Corporate Headquarters**

Kaseya Miami  
701 Brickell Avenue  
Suite 400  
Miami, FL 33131  
partners@datto.com  
www.datto.com  
888.294.6312

**Global Offices**

USA: 888.294.6312  
Canada: 877.811.0577  
EMEA: +44 (0) 118 402 9606  
Australia: +61 (02) 9696 8190  
Singapore: +65-31586291